

# Anglesea & District Historical Society

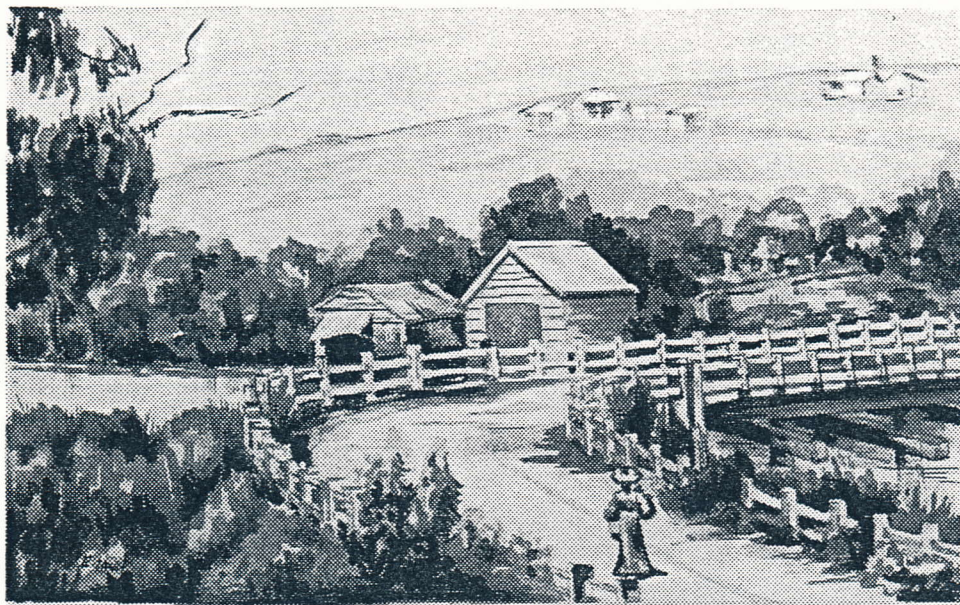
NEWSLETTER No 4  
September 1987

PRESIDENT

P. Denham  
631360

SECRETARY

S. Forsyth  
631430



## ANNUAL DINNER

Arrangements are being made for the 6th annual dinner of the Society. Our guest speaker will be Mr Malcolm McDougall, Regional Manager, Department of Conservation, Forests & Lands, who will have a good deal of interesting information for his audience. Do come and support your Society on this occasion.

DATE.....Friday 6th November  
VENUE.....Anglesea Hotel Bistro  
CHARGE.....\$15.00 per head

Please send your remittance, with the enclosed slip, to  
BOX 98, ANGLESEA, 3230  
by 31/10/87

## 1988 - CELEBRATING OUR BI-CENTENARY

This will be a special year in which you can be involved. Your Society has already taken the initiative and, in response to letters sent out to the various organisations in the hamlet, more than 20 representatives attended a meeting on 14th September, chaired by our President, to discuss ideas for celebrating the Bi-Centenary, with particular emphasis on Australia Day. A sub-committee was formed with Peter Gannon, representing the foreshore Committee, appointed as co-ordinator. At the next general meeting on October 26th (at the Memorial Hall) at 7.30pm, it is anticipated that a definite programme to follow the "Re-enactment Landing" (which proved such an outstanding success this year) will be formulated.



## OBITUARIES

### TOM ROGERS

Members were saddened to hear of the death of Tom, who was one of our foundation members. He was also a former Treasurer of the Society. We have several mementos from his estate on display in our Clubrooms.

### LES SMITHWICK

Les had recently agreed to speak about the art of coopering at one of our monthly meetings. It was with much sorrow that we learned of his passing shortly before this fixture. Our sympathy to member, Mrs Merle Smithwick.

### JIM LAWN

Always to be found when the Historical Society had open days, working bees, meetings, excursions etc, and also busily engaged so often when there were no organised events. So many jobs at our Museum have Jim's involvement stamped on them. At our September meeting the President called for a minute's silence, giving members the opportunity to indulge their special memories of a wonderful stalwart of our Society. In recognition of his dedication, our "Work Room" is to carry a plaque in his memory. All members extend sympathy to Edith and family.

## ANNUAL MEETING - CHANGE OF DATE

The weekend of 3rd & 4th October has been chosen by the Uniting Church for celebrations marking the centenary of the founding of Presbyterian worship in Anglesea. As a result, our Annual General Meeting will be held on Saturday 10th October at 7.30pm at 5 McMillan Street. Please make an effort to attend. Mrs Lucy King on Supper Roster, with additional help.

## ANGAIR INVOLVEMENT

Saturday 26th and Sunday 27th September. Angair has again agreed to have the Historical Society display during their festival - for this we are most grateful. Keith Cecil will be in attendance both days. Joan Murch will assist on Saturday from 10.30am to 1pm., Neil McDonald from 10am to 12noon Sunday; Shirley Forsyth, Lucy King and Edith Lawn at times to suit.

The museum at 5 McMillan Street will also open at the following times:-

SATURDAY:- 2pm-4pm Rita Whitelaw & Mollie Keat

SUNDAY:- 2pm-4pm Nancy McDonald & Evan Barsby

## ANGLEFEST 1987

The Primary School fete on the river bank - Sunday November 1st. The Historical Society will have its usual display with cards, calendars and books on display and for sale.

## PUBLICATIONS

### 1988 CALENDAR:-

This will appear with its Bi-Centenary flavour in time for the ANGAIR weekend.

### ALONG THE GREAT OCEAN ROAD series:-

The third in this series is available for sale. ANGLESEA STREET NAMES contains plenty of interesting information on the derivation of titles given to local highways and byways, together with reproductions of many early subdivisional plans. \$4.50 retail - \$4.00 to members. The fourth title - WRECKS (And Some Near Misses) has been proof-printed and a copy is available for perusal at the ANGAIR weekend. This rival to "Gone with the Wind" has 185 information packed pages and it is expected that bulk supplies will be available in about four weeks - advance orders accepted now.

### CORRESPONDENCE CARDS:-

Sets of four, featuring local scenes, have proved popular at \$2.00 per pack. To further augment our funds, a competition will be held over the next few weeks with the prize of a framed print of the scene depicted on page 1 of this newsletter. Brush work is by member Edith Lawn.

## RECENT ACQUISITIONS

The Society is most grateful to the following persons for donations:-

Dr & Mrs Wark  
Mrs D Leeman (on behalf of the late Tom Rogers)  
Anglesea Primary School  
Mr R Clarke  
Mrs E Stevens  
Mr P Denham

## MINISTRY FOR THE ARTS GRANT

Four members visited a Government department in Melbourne to view a display unit that had been admired at Wilsons' Promontory. The officer concerned generously gave us "working plans" of the unit, and one of our members is making the arrangements for the construction of such a fixture for our museum. Finance for the project has come from a \$500 grant from the Ministry, to which organisation details of its 'spending' will have to be supplied before December 31st of this year.



## INDIAN HAWKER RESEARCH

Following a request from the SWAN HILL PIONEER MUSEUM, letters were sent to various residents seeking information about the presence of Indian hawkers in this area. From the follow-up it would appear that this little project has created a good deal of interest. When the facts have been collated, a copy will be sent to Swan Hill and a duplicate kept with our records.

## CALENDAR OF EVENTS

### SEPTEMBER

26 & 27 ANGAIR WEEKEND (we are involved)

### OCTOBER

10 ANNUAL MEETING - 7.30PM

18 VISIT BY GEELONG HISTORICAL SOCIETY - 2pm

### NOVEMBER

1 ANGLEFEST - OUR DISPLAY ON RIVER BANK

6 ANNUAL DINNER - ANGLESEA HOTEL

### JANUARY

1 REGATTA DAY - HISTORICAL DISPLAY NEAR BOATSHED

26 BI-CENTENARY CELEBRATIONS



SEVERAL OF OUR CORRESPONDENCE CARDS ILLUSTRATIONS