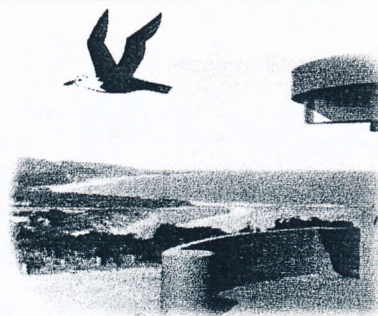


# Coastal Tide

Newsletter of ...  
The Anglesea & District  
Historical Society Inc.



Newsletter No 55  
July 2001

Anglesea & District Historical  
Society Inc.  
Box 98 Anglesea 3230  
Victoria, Australia.  
Incorporation No.  
A0009246F

President :  
Val Amery  
(03) 5263 1852

Secretary :  
Shirley Forsyth  
(03) 5263 1430

Treasurer :  
Beryl Parsons  
(03) 52631164

Meetings  
The Historical Society meets on  
the first Sunday of each month  
unless otherwise notified

Museum  
Our Museum at 5a McMillan  
Street Anglesea, is open on the  
second Sunday of each month  
2-4 pm.  
or by appointment

Web site -  
<http://home.vicnet.net.au/~angen/>

e-mail -  
[anghist@hotmail.com.au](mailto:anghist@hotmail.com.au)



## Winter snippets

What do you think of our new layout? Lindsay has been at his artistic best to upgrade our Newsletter appearance after it's somewhat "severe" presentation since inception.

Perhaps now members would like to get their thinking caps on to suggest a suitable name for our quarterly publication. e.g. Coastal call, Coastal Breakers - or will we leave it as Coastal tide??

Our welcome to winter program was enjoyed by a capacity house on Sunday a/noon July 1st when Queen Victoria and Benjamin Disraeli reminded us of the 150 year separation from N.S.W. thus creating the state of Victoria.

Another milestone was the discovery of gold - was it Warrandyte or Clunes 150 years ago. (Thank you to Melva and Stan for their efforts in such wonderful costumes!)

In keeping with the winter theme Ross Lipson, our guest speaker "transported" us to Alaska via delightful slides and commentary of when he spent 12 months on an exchange teacher job accompanied by his family. The extent of questions reflected the interest Ross' talk generated.

To illustrate the variety of subjects provided by our speakers one has only to recall Tara McGinty's address in May - she gave us an insight into the work she and her husband did at "Sanctuary" a refuge in Geelong West for the grief stricken members of our community.

Now in August we are travelling to Birregurra at the invitation of the newly formed Historical Society members and an enthusiastic bunch they are. Their collection is housed in a room at the rear of main street premises - our "viewing" will be followed by a/noon tea at another venue - makes us realise how fortunate we are with our Museum complex. A car pool will operate - we will meet at the Museum at 1 p.m. on Sunday August 5th - if you require transport please ring Val - 52631852 or Shirley 52631430 or any committee member.

## DOMESTIC MATTERS

The committee feels the constitution needs updating and Harry has been working on this and more news will be available in the future.

Continued next page



## Winter snippets continued from page 1

In September ANGAIR will again present their annual wildflower show. They have generously offered us space for exhibiting photos and the work of the Family History group. Last year we were fortunate to mount a display - Lucy's story - this year we will present "Deeming" which tells the life of a convict. Our thanks again to the Public Records Office for making this available.

### ACQUISITIONS

Generous members of the community continue to donate items to the Society - we are happy to now have 3 paintings by Edith Lawn on our walls. Edith is a former President and will be remembered for her art work on our notelets and cards and her beautiful printing on exhibit cards.

Judith Laird has also given us a painting by one time Anglesea resident Frances Burke who as well as her oil works was a textile and fabric designer

□ S.F.

### OUR WEB SITE

Pat and Lindsay report that our web pages are going beyond expectation. As at mid-July we have received 1946 "hits." Our schedule was 2000 "hits" by the end of next January. This makes us well ahead of estimates

### GREAT OCEAN ROAD INTERPRETATION BOARD

President Val Amery represented our Society at the official launch of Surf Coast Tourism's Interpretation Board

which celebrates the efforts of our Returned Servicemen in their creation of the icon we know now as The Great Ocean Road.

Val reports that .....

Mr. Bruce Ruxton (AM.O.B.E.) State President, Victorian Branch R.S.L. unveiled an Interpretation Board at the Memorial Arch on the Great



Ocean Road at Eastern View on July 18th He recalled he also unveiled a plaque in 1982 on the 50th anniversary of the opening of the G.O.R.

The present arch is number 3. The original arch was built in 1939. It was replaced in 1973 when the road was widened. This was destroyed in the Ash Wednesday fires 16th February 1983.

The Arch commemorates the construction of the G.O.R. as a memorial to Victorian Servicemen in World War 1 1914 - 1918. The G.O.R. Trust, a civilian initiative, established in 1917 to link up Seaside Settlements, proceeded in stages from 1919 onwards according to



availability of men and money. It provided work for ex servicemen. Up to 3000 men worked with pick and shovel, using stone and materials. They stayed in camps with vegetable plots, cooks and pianos.

The G.O.R. stretching from Torquay to Nelson fulfilled a dream, providing the motoring public with one of the most beautiful drives in the world.

Each year 1.2 million vehicles pass under the archway.

The A.D.H.S. has comprehensive photographic and printed records of the Great Ocean Road.

It was a privilege to represent the Society at the ceremony.

□ Val. A.

### **PHOTOS & MEMORABILIA NEEDED FOR HISTORICAL DISPLAY**

We need local photos or slides (formal or informal) for our Museum display. Please look through your collection and see what you have. We can copy these straight from your album. Please contact Lindsay Braden (03) 5263 3311. A.S.A.P



## FRED'S holiday COTTAGE

One of the first cottages to be built on Gladstone hill, west of the Anglesea river was that of Mr. Frederick B. White who at that time farmed a 1,235 acre property in the Pettavel vineyard area.

When George Noble put 20 blocks of his newly subdivided "Gladstone Estate" on the market in 1884, Fred secured 2 sites on the rising ground, which at that time commanded a magnificent view of the ocean and coastal scenery. These were lot 9 Harvey Street and lot 19 Parker Street- they adjoined at the rear.

Now in those days home sites were not of the "pint size" variety as in today's new subdivisions, but were of one acre. They had to be this size, because after erecting a cottage, space was needed to tether your horse, also room was required for a dam, and last but not least a convenient site was essential for a toilet hole (just a short walk from the cottage).

Fred erected a timber cottage with a galvanised iron roof draining

## 'THEY STAYED UNTIL THE TANK WATER RAN OUT'



into an adjoining tank for drinking water. Being a farmer he soon fenced the land and dug a good waterhole for the use of the horse. He also had what was described as a "well found boat" with centreboard, which suggests that sea fishing was his interest.



This was before the bridge was built. After crossing the river mouth the main track to Aireys wound it's way up the hill past his Harvey Street frontage. Of course as you know after the bridge was erected, the main route to Aireys then changed to Noble Street, and much later to the Great Ocean Rd.

Records show that by 1888 Fred Whyte had sold both his

Pettavel and Anglesea properties and moved to "good old Ballarat" to feel what cold weather was like.

The buyer of the Anglesea acreage was John W. Gibson from Colac. Gibson sold the land and cottage to another Fred in 1889.

*This was the well known*

**Frederick J. Harvey of Newtown**, whose Produce business Harvey Dann & Co. was in Ryrie Street Geelong. Frederick J. then enlarged the cottage to accommodate his family. For many years there was only a dirt floor in the kitchen.

His son William Wyatt Harvey reminisced that he was 6 years old when he first came to Anglesea in a coach driven by Henry Bubb, and was frequently there until 1963. *In summer they would stay at the cottage until the tank water ran out.*

Eventually Fred Harvey acquired another 7 adjoining one acre blocks from various owners. Over the years these were re-subdivided, and Gardiner Street and Bannister Avenue eventually came into being.

**Fred's old Cottage was demolished when the Armytages built their new house in Gardiner Street during 1963**

□ Lindsay Braden



# EARLY ANGLESEA

(part two)

continued from our previous Newsletter

**W**hen fishing and hunting parties first discovered our area, it was named Swampy Creek. This was after the small creek that ran down from the hills to the sea, and *abundantly* supplied with bream and other varieties of fish.

In 1884 the Postal Hamlet's title was changed to Anglesea River, but it was not until 1961 that the township was officially designated only as Anglesea.

It would seem that in the 'early-early' days three ladies played an important part in helping to establish our seaside area. They realised that the number of holidaymakers would be limited so long as travellers

had to 'rough it' under a canvas tent.

Anna Mackay and Agnes Murray soon made things more acceptable when they each opened a boarding-house fronting onto the main track into town (now Camp Road).

Alice Jackson opened a Hotel further along at the corner.

Anglesea soon became a popular resort for fishing and hunting parties from Geelong, and these ladies provided vacation



*Anna Mackay's boarding-house*

accommodation for the *adventurous tourists*.

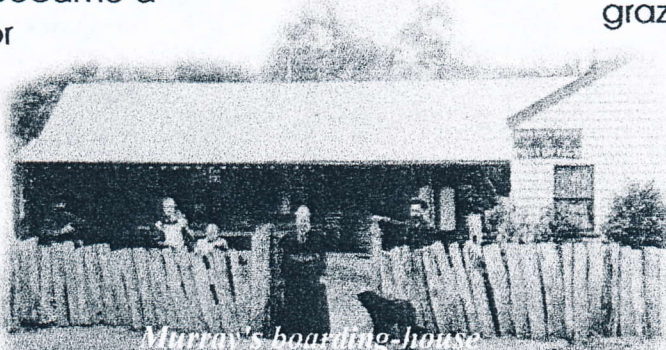
## George Noble subdivides part of his grazing land

When you read through records it becomes quite obvious that the early callers to our area were mostly from Geelong, with a sprinkling from Melbourne and Ballarat. Most were impressed with what they saw and soon inquired about purchasing a site for a holiday cottage.

Hoping to take advantage of this situation was one George Noble who instructed his surveyor Mr. A. L. Campbell, to subdivide some of the 600 acres of gently sloping, well sheltered land on the western side of the river, that was originally procured by his father.

Noble's at first used this land as a grazing outstation in

conjunction with their Modewarre property "Glentree," which is just north west of today's Forest Road gravel pits.  
■ L.B.



*Murray's boarding-house*

- to be continued in our next newsletter