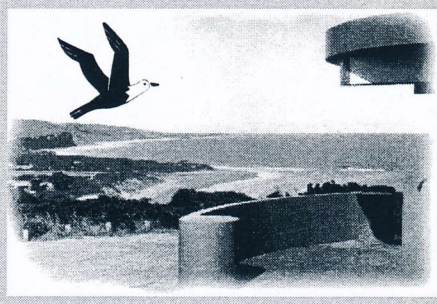


Coastal Current

seaside tidings from ...
**The Anglesea & District
Historical Society Inc.**



**Newsletter No 87
September 2009**

**Anglesea & District
Historical Society Inc.
Box 98 Anglesea 3230
Victoria, Australia.
Incorporation No.
A0009246F**

President :
Norma Morrison
(03) 5261 6239

Secretary :
Bruce Bodman
(03) 5263 1249

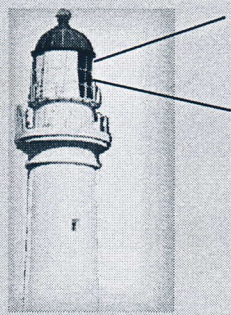
Treasurer :
Thelma Western
(03) 5263 2865

Researcher
Lindsay Braden
(03) 5263 3311

Meetings
The Historical Society meets on
the first Sunday of each month
unless otherwise
notified

Museum
Our Museum at 5a McMillan
Street Anglesea, will be open
during the Xmas and Easter holidays
on Sundays 2-4pm or by
appointment.

email-normamor@tpg.com.au



During 2009, several significant anniversaries have come and gone, but the one nearer to home is the 20th Anniversary of the Anglesea & District Community House.

The house that has become a home, was one of several donated after the 1983 bushfires by the Tasmanian Government to the then Shire of Barabool.

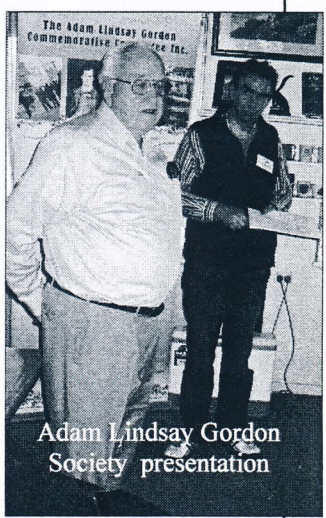
Since then, through sheer hard work, extensions and dedication by past and present committees and volunteers, it has now become an integral part of our district.

Friday 28th August marked the anniversary with the launch of "Giving Community Heart", a 20 year history of the Anglesea & District Community House, written by Marianne Messer. Many residents now look upon the house as a wonderful resource and congratulations to all involved over the years. Marianne's book can now be purchased from our Society.

Anglesea Art Walk is progressing. Mosaic Artist, Katie Van Nooten has been appointed by the committee to co-ordinate and assist the various interest groups in the design and execution of their ideas. If any member

is interested in assisting with design, or the actual making of the ADHS mosaic panel, please contact the secretary on (03) 5263 1249.

At the August Meeting, the Adam Lindsay Gordon Society addressed the members and conducted a power point presentation on the life and times of this iconic poet, policeman and amateur steeplechase rider.



Adam Lindsay Gordon Society presentation

We have no news on the progress of the Federal Government grant application towards the restoration of Loveridge Lookout. However, the Society is presenting a display at the Angair Wildflower Show (19/20 September) to aid efforts in raising funds for the restoration.

Finally, best wishes to all our members who have been unwell over the past few months.

Bruce Bodman
Secretary

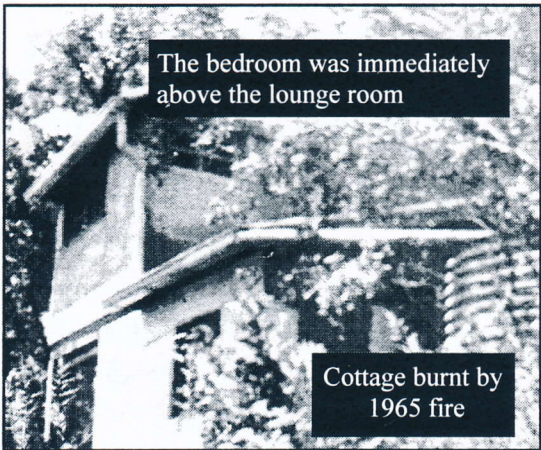
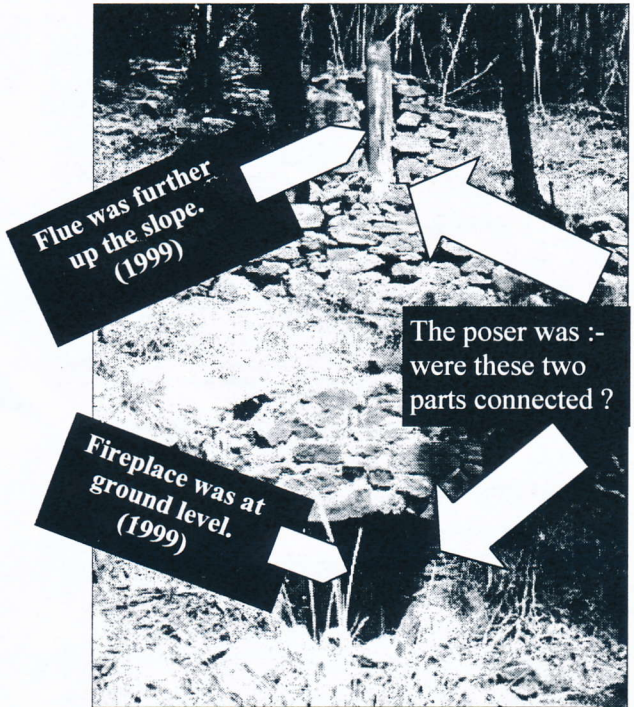
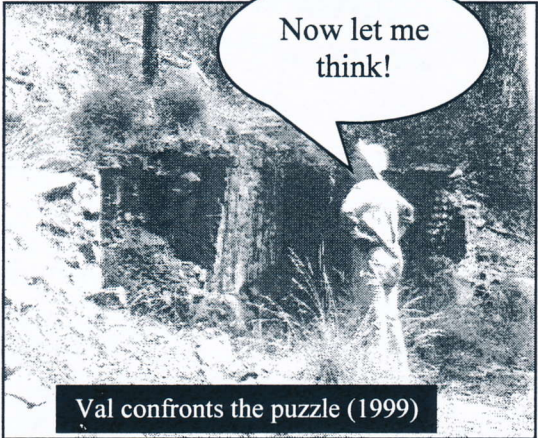
NOTICE OF GENERAL MEETING

Notice is hereby given that the
ANNUAL GENERAL MEETING of the
ANGLESEA & DISTRICT HISTORICAL SOCIETY INC.
will be held at our Museum 5a McMillan street Anglesea,
on **Sunday 4th October at 2pm**

Completed, signed, nomination forms to Secretary by Sunday 27th Sept. 2008.

"active researchers"

Mystery solved!



Back in 1999 Val and Jim Amery plus Ruth and myself visited the old Edna Walling cottage site at Big Hill. *

One thing that puzzled us all was the remains of a fireplace at ground level, and what appeared to be a chimney flue off-set further up the slope.

The question was - were the two visible parts connected?

I mentioned this in one of our Newsletters and closed the article with research to continue.

Time went by and the mystery was forgotten....

Now, there's nothing like a new face on the scene. Recently we completed a photo order for a gentleman whose holiday home is at Big Hill. We also put in some of our research about the area. This included our Edna Walling article.

Two days later I received an email which stated :-

Your research note on East Point asks why the flue is crooked - the answer is on the web in Walling's unpublished book - "The happiest days of my life."

"Building that fireplace was easy enough but devising the flue was certainly not, for the bedroom was immediately above, so I had to swing it up towards the hill-side under the room and then build the chimney out-side. It was the funniest little one but it wasn't ugly and it did draw."

So there you are. We were looking at the scene as now, not as it was in the past. Mystery solved - there's nothing like new input, and my old saying once again comes to the fore -

WITH HISTORY RESEARCH, ONE THING LEADS TO ANOTHER!
 ■ L.B.

- The name "Big Hill" first appeared as a landscape description. on a Aireys Inlet to Lorne walking map This designation was later used on Broadbent touring maps.

ROBT. HUNT'S 'COO-EE' LOT 18 MCMILLAN STREET.

1919.

Robert Shaw Hunt of 'Victoria Heights' Waurn Ponds, purchased one-acre lot 18 McMillan Street early in 1919, and erected a cottage named 'Coo-ee' by Xmas of that year.

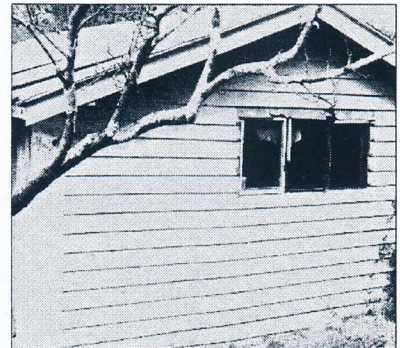
This was built with materials from their original Waurn Ponds farm house. (per Isabel Royal). It was close to both of Hunt's sisters - Emma Mawson in Noble Street, and Et. Webb in The Esplanade.



Hunt also had a river boatshed and a bathing box. **As there were no tall trees in that vicinity, the cottage was erected to the rear of the block to take height advantage of the view to the river mouth.**

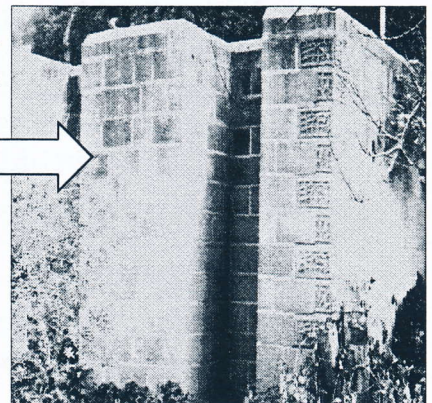


Lot 18 was sold to Mrs. L. A. Russell in 1926. The Russells lived there until 1938, then moved to 'Bridge View.' A rate book entry shows Mrs. Russell sold to the Filkins in 1946 for £1075.



Fran Filkins for a short period used it as a boarding house for local workers.

The Shire acquired the property in 1994. In 2009 the 'Coo-ee' homestead is still alongside the Community Health centre, but the remains of the garden, plus Filkin's external shower block and Hunt's shed, were demolished during March 2000 to make room for the new Community House car park driveway ■ L.B.



At last! - a photo of Marion inside her store



ANGAHOOK CAFE & STORES
ESPLANADE CNR. MINIFIE STREET 1929

REG AND IVY BALDRY founded this well-known General Store in 1929. In 1937 they moved to Lorne. Employee MARION FRANCIS managed this establishment for them until 1942. She was then given the chance to purchase the business and freehold on land 165ft x 129 ft. After talking things over with Phil Harvey, Marion went ahead with the deal, and became proprietor of the Angahook store and Cafe. The shop had two front entrance doors to comply with the Law of that time, and allow the Grocery section to be closed off on a Sunday. The building contained a General Store, a grocery section, plus dining room and kitchen. There was also a small accommodation section. Marion Francis died in 1963 - *some say Anglesea has never been quite the same since.* The establishment named for some time as 'Maid Marions' is alive and well in 2009, and has reverted back to it's original name of Angahook Café & Stores ■ L.B.