

Coastal Current

seaside tidings from ...
**The Anglesea & District
 Historical Society Inc.**



Newsletter No 88
 December 2009

Anglesea & District
 Historical Society Inc.
 Box 98 Anglesea 3230
 Victoria, Australia.
 Incorporation No.
 A0009246F

President :
 Harry Davies
 (03) 5263 1726
 Secretary :
 Bruce Bodman
 (03) 5263 1249

Treasurer :
 Thelma Western
 (03) 5263 2865

Researcher :
 Lindsay Braden
 (03) 5263 3311

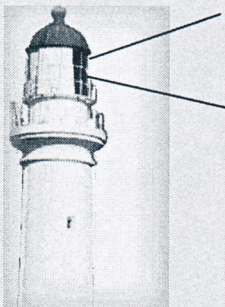
Meetings

The Historical Society meets
 on the first Sunday of each
 month unless otherwise
 notified

Museum

Our Museum at 5a McMillan
 Street Anglesea, will be open
 during the Xmas and Easter holi-
 days on Sundays 2-4pm or by
 appointment.

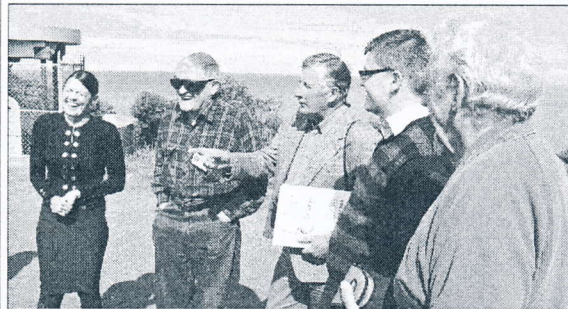
email- bodman@
 netspace.net.au



AREA MUSINGS

Loveridge Lookout

Now that we have been successful in our Federal Grant appli-
 cation, the Society needs to commence the community fund



Cr Libby Coker, Harry Davies, Cr Jim Tutt, Darren
 Cheeseman and Bruce Bodman at the Lookout.

raising in earnest. Several pledges for assistance have been re-
 ceived, and the Bendigo Bank (Anglesea Branch) has been most generous in their support of this project. The Society has set up

a dedicated bank account "Friends of Anglesea Loveridge Lookout". **Any member who wishes to donate towards the restoration fund can make their payment to the above account.**

Heritage Day will go ahead on Sunday 7th March 2010. "The Friends of the Bark Hut" committee is being reactivated and an interesting program on the day is assured.

Now for more good news, a contract has been let for installation of power to the precinct; also we are hopeful that the re-cladding of the roof will be completed by Heritage Day.

The last in a series of **plaques** along the Great Ocean Road, honouring WW1 Veterans has recently been unveiled at Apollo Bay. The 12 plaques are located at various sites between Torquay and Lavers Hill. The plaques were designed and created by Dr. Ross Bastiaan, who is renowned for this method of honouring our military heritage. Various historical societies along the Great Ocean Road assisted Dr. Bastiaan with historical details.

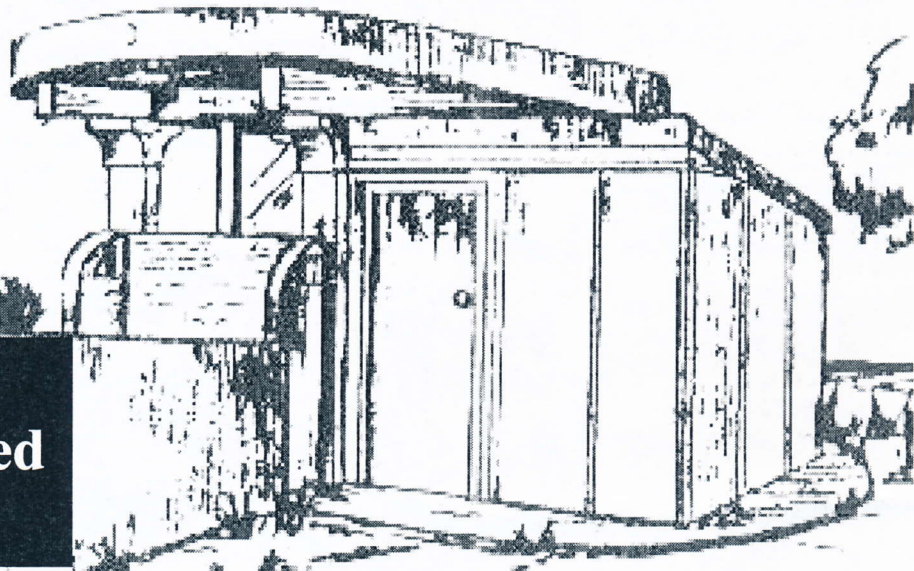
In conclusion, the President and Committee wish all members and their families a happy festive season and a safe and healthy 2010. ■ **Bruce Bodman** Secretary

Loveridge Look-out WWII

Avro Ansons flew over Anglesea twice daily for submarine patrols



**RAAF
prohibited
area**



DURING 1938 Mrs. Bertha Loveridge from Anglesea's "Anglecrest" financed erection of this scenic lookout on the Crown Land reserve, just down the hill from her prominent two storey home.

Little did she realise that in four years time this would be occupied by the Volunteer Air Observer Corps for period 1942 - 1945. Their mission was to scan the sky for friend or foe, and report back all planes and anything unusual passing by. They had a direct telephone line to Geelong RAAF control, where reported information was collated and passed on to (Preston) Melbourne.

By 1945 Anglesea had made a record 3000 aircraft movement reports ■ *Lindsay Braden*

"active researchers"

*The Roadknight bay area
has seen many*



1. The McMillan family with Jonas

Hollingworth at Roadknight 1910

2. Netting the bay 1917

3. Formally dressed group (shirt and tie) cray-fishing at the rockpool 1917

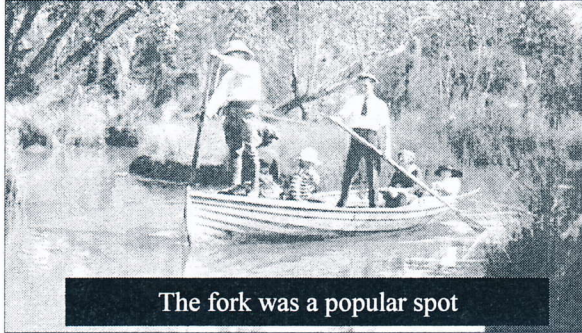
4. On the beach 1937, before the ramp was built.

5. The fisherman's Association hut was demolished in the late 1970's

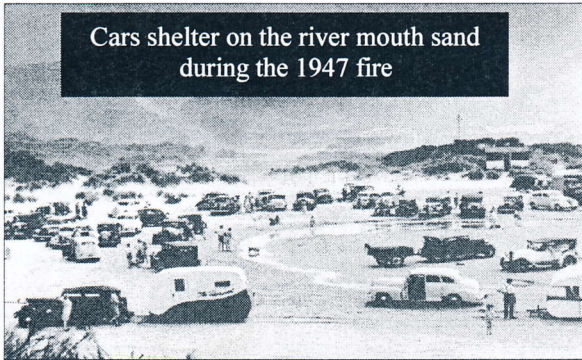
6. Extra high king tide interrupts sea wall construction near soapy 1975.

foto-past

ANGLESEA'S POPULAR RIVER



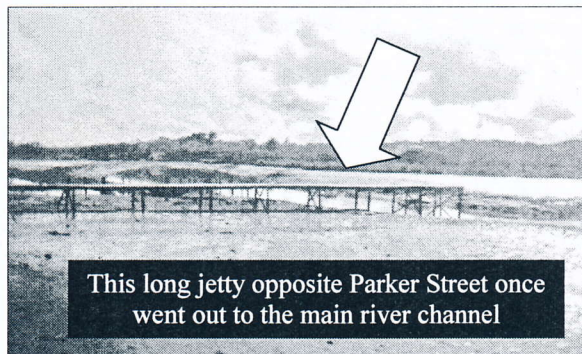
The fork was a popular spot



Cars shelter on the river mouth sand during the 1947 fire



Controversial river wall of 1975 is now covered with tidal sand.



This long jetty opposite Parker Street once went out to the main river channel

Anglesea's first focal point was the excellent tidal stream. This soon became a favourite destination for fishing and hunting parties from Geelong. These adventurous people originally camped by the side of the waterway.

The late Peggy Bunton (Paton) mentions in her book "The Hut" that when they first came to the area for the Xmas 1912 holidays, the river commenced in a very pretty spring with ferny pool just up from the fork. They often picnicked there because the water was cool and clear. By the time this reached the junction of Gum and Scrubby Creeks it was brackish.

Peggy mentions that this tranquil spot was completely altered after Distillery Creek Road was built across, and the coming of the Alcoa mine.

Just before WW2 there were over a dozen boatsheds south of the old bridge plus another 3 sheds on the north side of the wooden structure. Seven more boatsheds were once opposite Parker Street. Some of these had long jetties out to the main channel. These early timber walkways were popular with fishermen.

In 2009 the river mouth sand has become a worry. In the early days water came down from the hills unimpeded, and after heavy rain cleared out any tidal blockage at the mouth. After the coming of the coalmine, it was runoff water from the township streets that kept the stream clear, but at a cost. By the 1980's gravel from two particular unmade roads was often swept into the watercourse during heavy rain. The Shire of Barabool after issuing road-making notices in one of these streets north-west of the bridge, did not proceed with the project because of a

MINORITY OBJECTION.

This opposition came from owners of two flats in a block of four. These people were not permanent residents and have since sold and departed elsewhere. The offending carriageway is still unmade because of these protests.

Since the days of township settlement the river has certainly seen many changes. ■