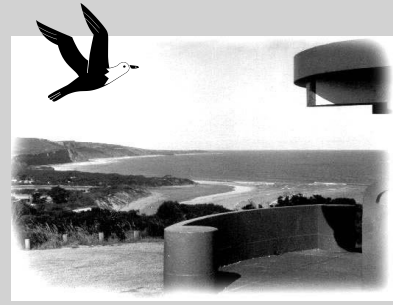


Coastal Current

seaside tidings from ...
The Anglesea & District
Historical Society Inc.



**Newsletter No 89
April 2010**

**Anglesea & District
Historical Society Inc.
Box 98 Anglesea 3230
Victoria. Australia.
Incorporation No.
A0009246F**

**President :
Harry Davies
(03) 5263 1726**

**Secretary :
Bruce Bodman
(03) 5263 1249**

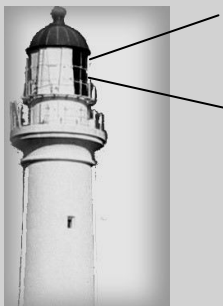
**Treasurer :
Thelma Western
(03) 5263 2865**

**Researcher
Lindsay Braden
(03) 5263 3311**

**Meetings
The Historical Society meets on
the first Sunday of each month
unless otherwise
notified**

**Museum
Our Museum at 5a McMillan Street
Anglesea, will be open during the
Xmas and Easter holidays on Sun-
days 2-4pm or by
appointment.**

**email- bodman@
netspace.net.au**



Welcome to the Autumn Edition of Coastal Current

At last, power has been connect-
ed to the Bark Hut precinct,
which I am sure will make the
area more
appealing
and func-
tional for
community
events.

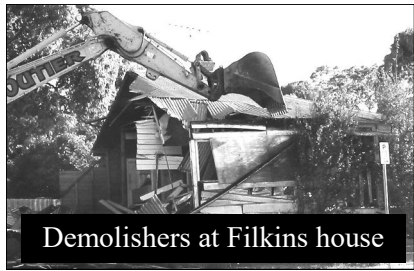
Our thanks
to the Surf-
coast Shire
in award-
ing a minor grant . This grant,
together with funds from the
ADHS were used towards the
cost of this work. The Hut has
been reroofed

with new
bark by Peter
and Troy
McConachy
from Gipps-
land who
provided all
the roofing
materials and
the expertise required for this
work to be completed. The interior
has been smartened up with
new photographic and text
display panels. Our thanks go also
to ADHS members Jan Morris,
Lyle McConachy, Melva and
Stan Stott, who all helped on the
day.

Sadly, the Bark Hut Heritage
Day program planned for the
official “switch on” was can-
celled due to inclement weather.

Anglesea Loveridge Lookout –
Work on the restoration compo-
nent of the project started today
(24/3/2010). The contractors,
Vertitech Australia, have been

given a site induction, with the
construction period expected to
be 4 weeks. Our community
efforts towards funds for the
Lookout are slowly accumulat-
ing, and recently we learned that

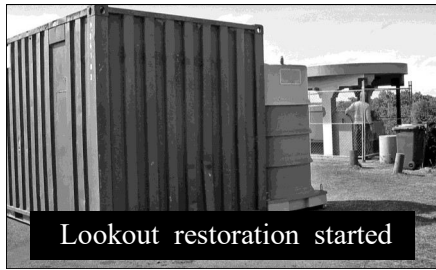


Demolishers at Filkins house

Alcoa Australia
have approved our
grant application.

Geelong Heritage
Festival 2010 is
celebrating the
Centenary of the
City of Geelong
proclamation

(1910). The festival is sched-
uled for 17th and 18th April. On
Sunday 18th April - there will be
numerous group Heritage dis-
plays held in



Lookout restoration started

the foyer of
the State Gov-
ernment of-
fice, 30-38
Little Malop
Street, Gee-
long. ADHS
will have a
display to pro-

promote our publications and our
Society. Hope to see you there.
After a lot of too-ing and fro-
ing, one of our precinct icons
Filkins house has finally been
demolished and the surrounding
area cleared.

***Our April meeting has been
cancelled as it will fall during
the Easter break.***

■ ***Bruce Bodman***

BAILEY BRIDGE OVER HUTT GULLY 1954

Almost twelve inches of torrential rain fell during the evening of Monday 15/2/1954.

The impact of the deluge pushed debris down from the hills, effectively blocking a small culvert pipe at Hutt Gully. Water spilled across the road, gouging an impassable gap some 50' deep and 130' wide, cutting the traffic between Anglesea and Lorne.

Within 48 hours the Country Roads Board mobilised the 22nd Reserve Construction Regiment to come from Melbourne and erect a single lane Bailey bridge across the moistened site.

This system incorporated portable sections, light enough to be manhandled and joined.

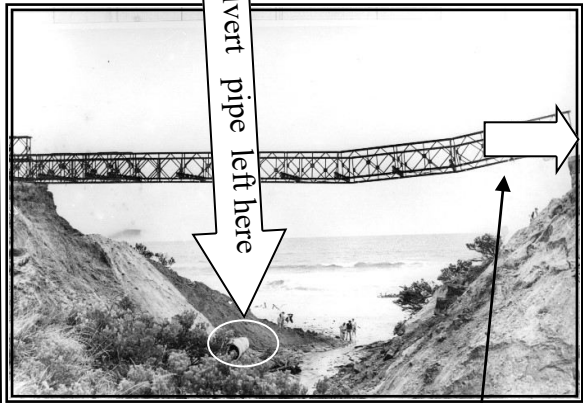
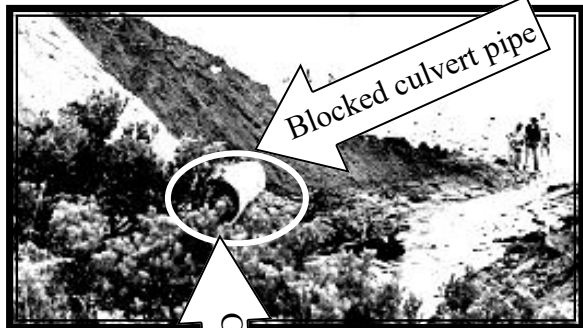
These were assembled onto heavy metal rollers, and pushed bit by bit across the gap, until they ran along rollers on the other side.

Great Ocean Road traffic proceeded across the temporary carriageway only 24 hours after the job commenced.

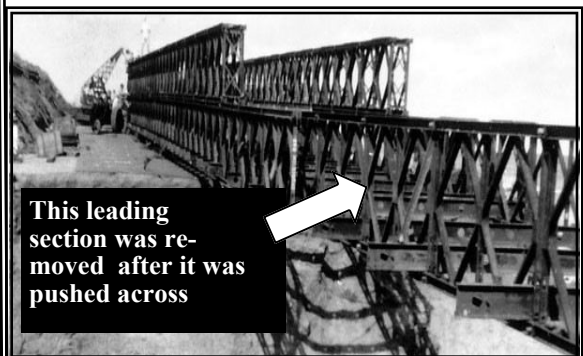
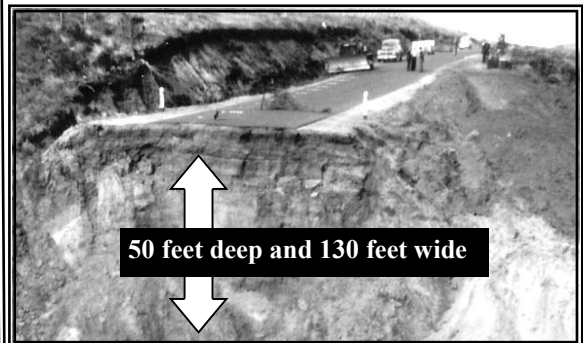
A new culvert of larger diameter was installed. A small plaque on the side of this structure is inscribed CRB1954.

Today the Hutt Gully crossing is almost a forgotten history.

■ L.B.



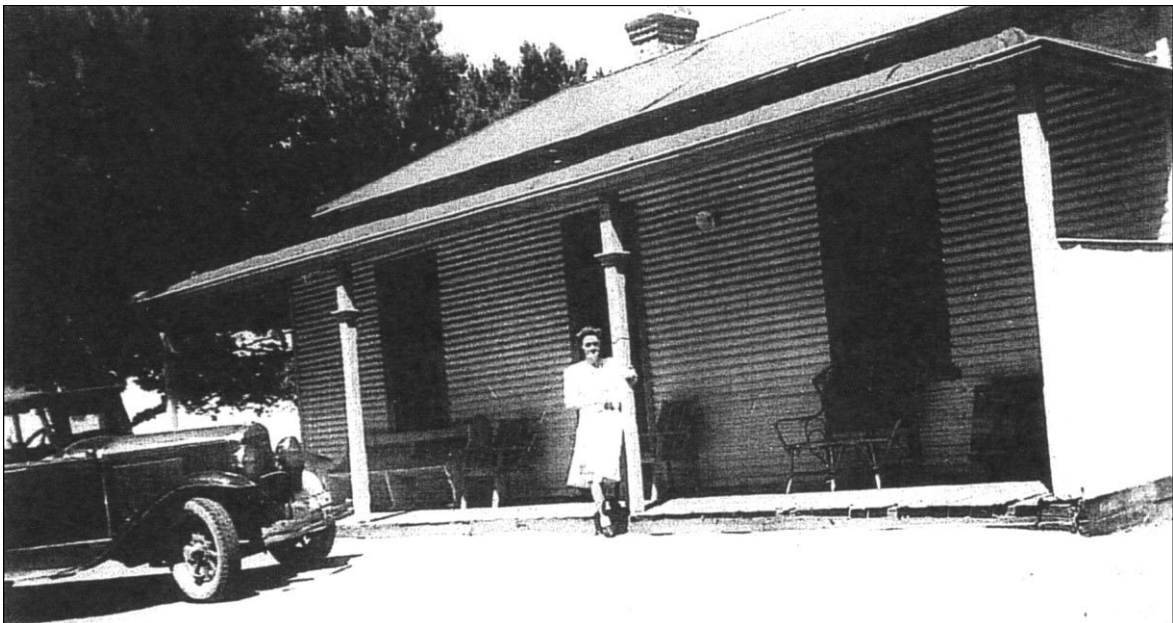
Leading section being pushed across gap





MARION FRANCIS ANGAHOOK GENERAL STORE - WARTIME 1943

1. During WW2 after the Japanese had made very fast advances in the south west Pacific area, the military authorities in Australia were concerned regarding a possible Japanese landing on our south coast. Accordingly all township signs and area designations on public buildings in the area were painted out. The name on Marion's General store did not escape this requirement and was removed.
2. Also note that the name on the petrol sign during that time was Texaco not Calterx as we know it today. *Photo and information from Barry Shackleton*



"MOUNTAIN HOUSE" AIREYS INLET 1946

This interesting photo was taken during early December 1946 by Mr Barry Shackleton. Note the corrugated sheeting on the external walls. Mountain House was destroyed by the 1983 bushfire and the area later became a caravan park

The WW2 Gherang Army Camp



Nearby locality GHERANG has been in the news lately regarding geothermal power.

During the Second World War, a temporary military camp was established in this vicinity just to the east of the Otway Forest.

To service this, troop trains ran to the Gherang Railway platform on the old Wenslydale Saddle Line. The 'rickety track', which had fallen into disrepair, was patched in 1941.

The 12th Armed Regiment formed on 8th May 1942 from the 18th Mot Regiment at Clapham, South Australia. Part of the 6th Armed Brigade of the 2nd Armed Division, the Regiment moved to the Gherang Army Camp on 12 June. The camp (and the hut) had been established by this time.

Occupation at Gherang by the 12th Armed Regiment was to be short-lived, because on 24 July 1942 this group was relocated to Puckapunyal. The second Cavalry Division made its presence felt by allegedly damaging the Shire's roads. The Council unsuccessfully sought compensation from the authorities.

The Camp was disbanded on 13 April 1943.

A former Army Hut was relocated to Winchelsea, after 1955. It is an example of a P1 hut, one of a series of defence structures of standard design to cover all the accommodation requirements of the Army.

■ L.B.

